

# Workforce housing

As a rural housing issue



# Housing Availability

- ▶ Housing produced by local builder
- ▶ Housing produced by regional builders
- ▶ Housing produced by offsite builders



# Housing style

- ▶ Single family homes
- ▶ Single family attached homes
- ▶ Multifamily rental





# Housing cost

- ▶ High end executive homes
- ▶ Affordable single family homes
- ▶ Market rate rental



# Impediments to housing production

- ▶ Lack of local builders
- ▶ Minimum cost to produce a home
- ▶ Appraisal problems
- ▶ Lack of subcontractors
- ▶ Lack of material supplies

# Solutions

- ▶ Create a product that meets expectations
- ▶ Create a product that reduces need for subcontractors
- ▶ Create a product that cuts construction time
- ▶ Create a product that is adaptable to a wide range of site conditions









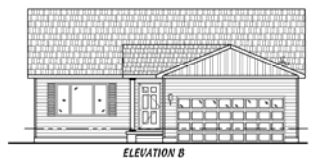
NOTE: FLOOR PLANS AND ELEVATIONS CAN BE EASILY REVERSED SO THAT THE GARAGE CAN BE ON OPPOSITE SIDE.

# THE COLORADO

By Vantage Pointe Homes

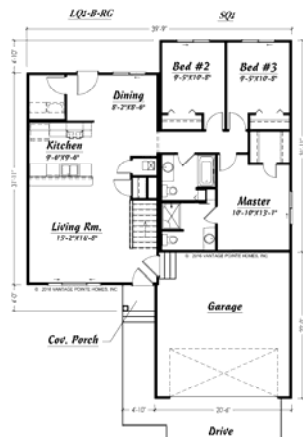


### #1: Select an Elevation



### #2: Design the Floor Plan

STANDARD LAYOUT SHOWN BELOW  
VIEW THE OPTIONAL "LIVING QUARTERS" BOX  
AND "SLEEPING QUARTERS" BOX  
LAYOUTS TO MEET SPECIFIC NEEDS



1269 Sq. Ft. Main Level  
20 Sq. Ft. Covered Porch  
667 Sq. Ft. Garage

#### PLAN DESIGNATION KEYS



### #3: Select an Optional "LIVING QUARTERS" Box

IDEA: CUT OUT THE BOXES AND PLAY WITH THE POSSIBILITIES



### #4: Select an Optional "SLEEPING QUARTERS" Box

IDEA: CUT OUT THE BOXES AND PLAY WITH THE POSSIBILITIES





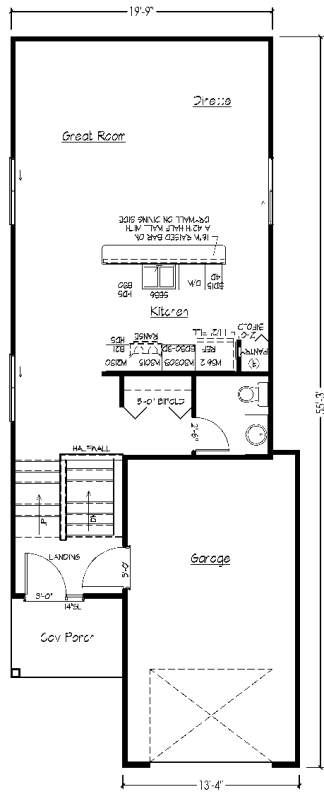


# Split Entry Concept

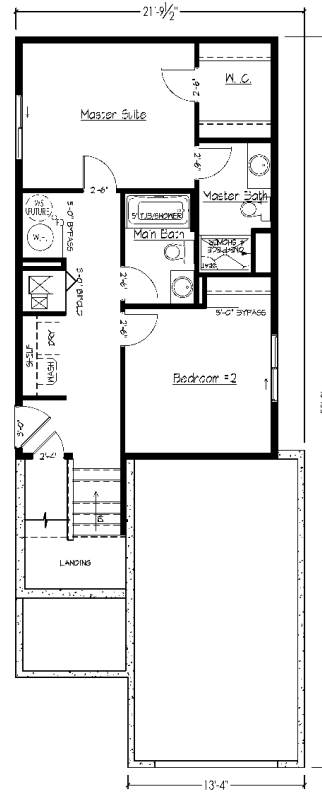
1/8"=1'-0" 2/28/17



630 SQ. FT. MAIN LEVEL  
 830 SQ. FT. LOWER LEVEL FINISH  
 93 SQ. FT. PORCH (STAIRS/ENTRY)  
 51 SQ. FT. COVERED PORCH  
 304 SQ. FT. GARAGE



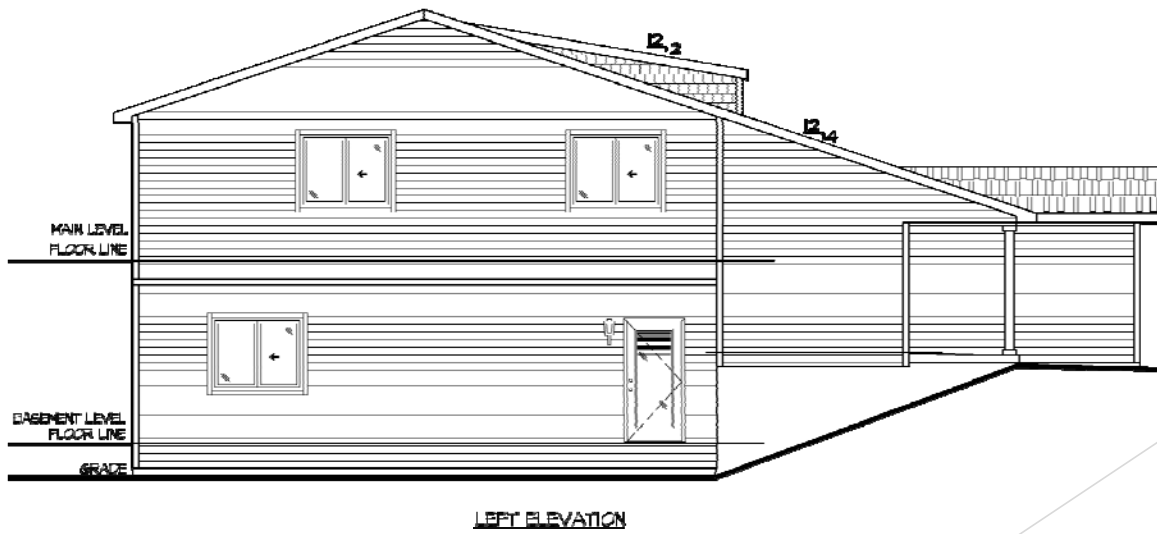
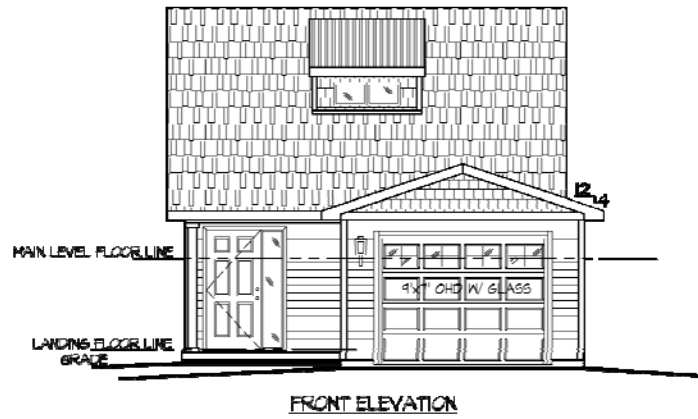
MAIN FLOOR LAYOUT



LOWER LEVEL LAYOUT







# COMPONENT TOWNHOMES

1/16"=1'-0"

2/28/17



655 SQ. FT. MAIN LEVEL (EACH UNIT)  
655 SQ. FT. SECOND LEVEL (EACH UNIT)  
192 SQ. FT. COVERED PORCH (EACH UNIT)  
280 SQ. FT. GARAGE (EACH UNIT)





Thank you

